

DATE	13/2/02
REVISION	FIRST ISSUE
ISSUE	1

INSTALLATION DRAWING

UNCONTROLLED ISSUE
PRINT ISSUE WILL NOT BE KEPT UP TO DATE

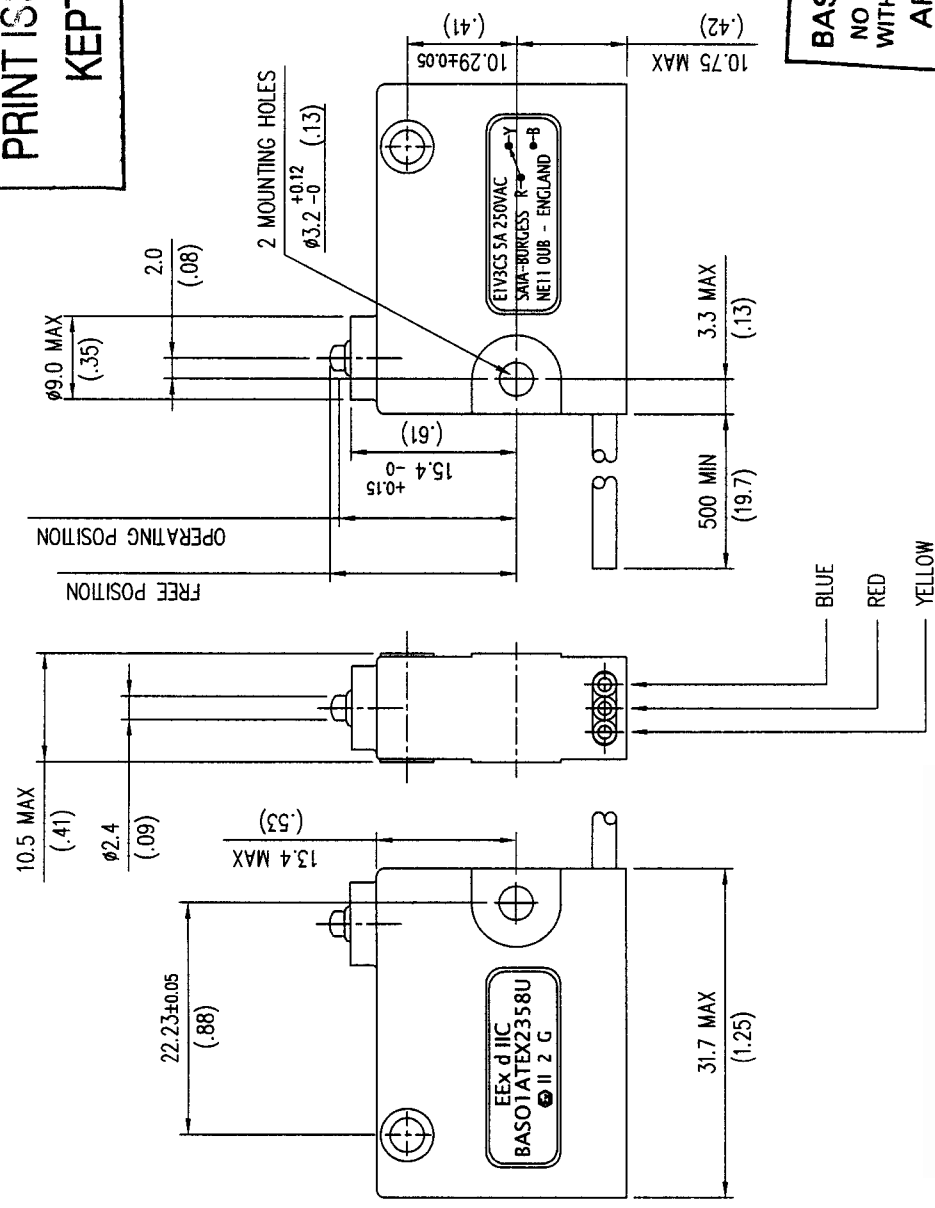
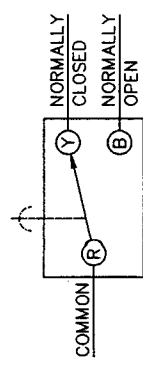
SWITCH FREE VOLUME LESS THAN 1cc

SPECIFICATION

ACTUATING FORCE :- 3.9N (14ozf) MAX.
 RELEASE FORCE :- 1.1N (4ozf) MIN
 FREE POSITION :- 18.1 (.71) MAX.
 OPERATING POSITION :- 16.7 ±0.5 (.66)
 MOVEMENT DIFFERENTIAL:- 0.4 (.016) MAX
 OVERTRAVEL (AVAILABLE) :- DEPRESS TO CASE.

SWITCH ENCLOSURE TESTED TO A PRESSURE OF 3.86 BAR (56 P.S.I.) BEFORE FITTING COWL.

THIS SWITCH HAS A COMPONENT CERTIFICATE TO ENS0018:2000. FLAMEPROOF ENCLOSURE 'D'. CERTIFICATE No. BAS01ATEX2358U.



DEGREE OF PROTECTION : IP67

-9 MAY 2002

BASEEFA Certified Product
 NO MODIFICATIONS PERMITTED WITHOUT THE APPROVAL OF THE APPROVAL ENGINEER

SICATRON
 elektronik & automation

<p>SAIA-Burgess Electronics SWITCHES • MOTORS • CONTROLLERS SAIA-Burgess Electronics Limited Dukeway, Team Valley Trading Estate Coteshead, Tyne & Wear NE11 0UB Tel: (0191)4016100, Fax: (0191)4016322</p>		<p>THIRD ANGLE PROJECTION</p> <p>DO NOT SCALE! This drawing must only be amended on CAD system</p>		<p>TOLERANCES UNLESS STATED:- NO DECIMAL PLACE : ±0.50 1 DECIMAL PLACES : ±0.25 2 DECIMAL PLACES : ±0.15 ANGULAR : ±1° INCH - OUNCE UNITS (IN BRACKETS)</p>		<p>DRAWN DATE 21/1/02 SCALE 2 : 1 DATE ISSUED</p>		<p>D.J.C. 21/1/02 ENGINEERING QUALITY ASSURANCE</p>		<p>APPROVED</p>		<p>TITLE / DESCRIPTION E1V3CS ATEX (KESTREL)</p>	
<p>ALL DIMENSIONS SPECIFIED IN MILLIMETRES</p>				<p>DRG No :- C 44454</p>				<p>A3</p>					